

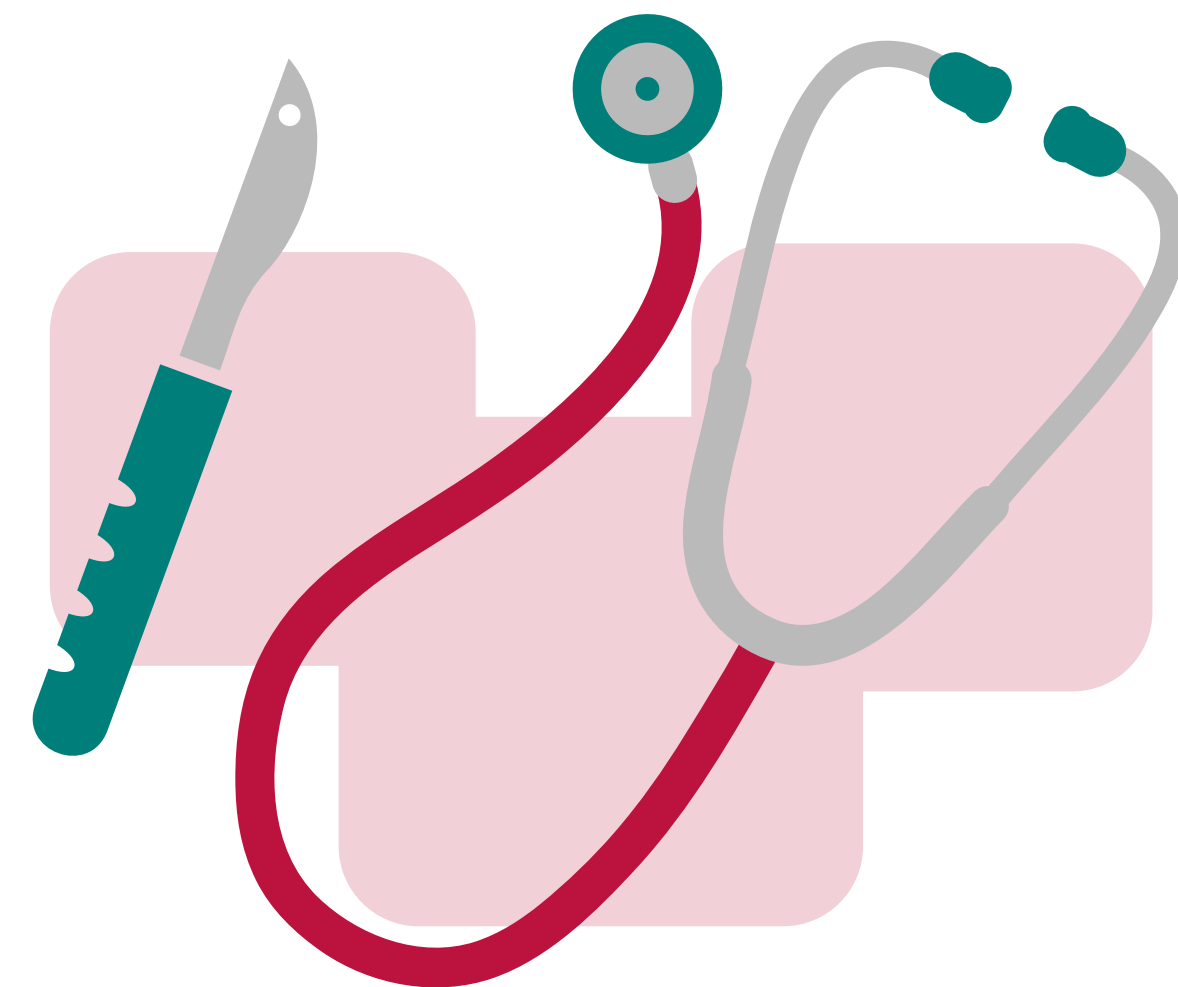
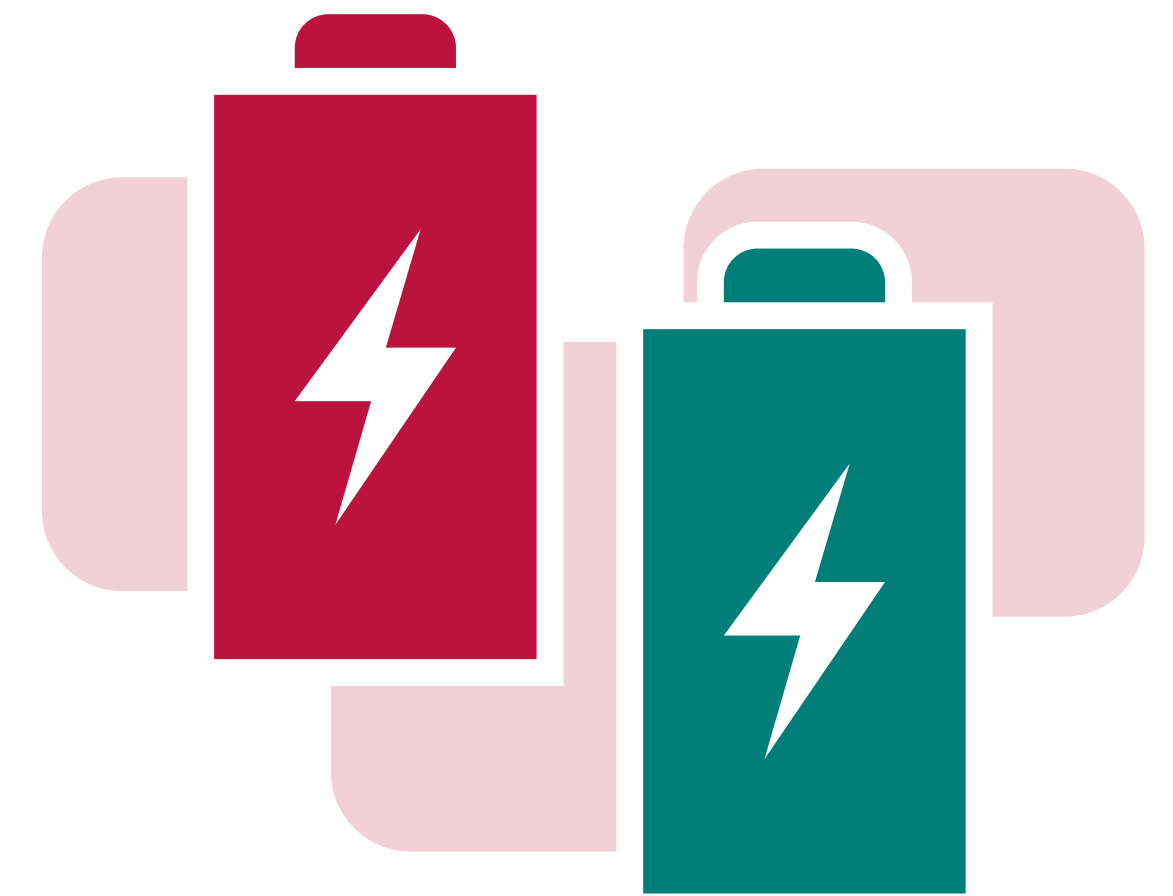


# Mining is Essential.

The materials and products we deliver play a critical role in keeping us and the rest of the world healthy, safe and connected.

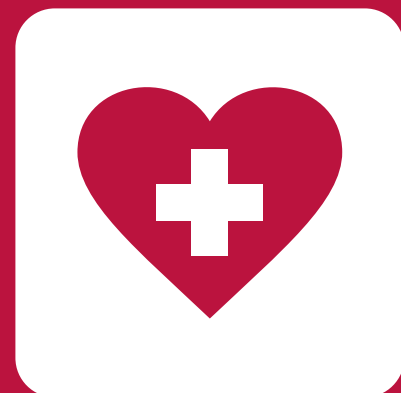
## Variety of Metals

A variety of metals, including nickel, are used to make lithium-ion rechargeable batteries that power portable ventilators.



## Nickel

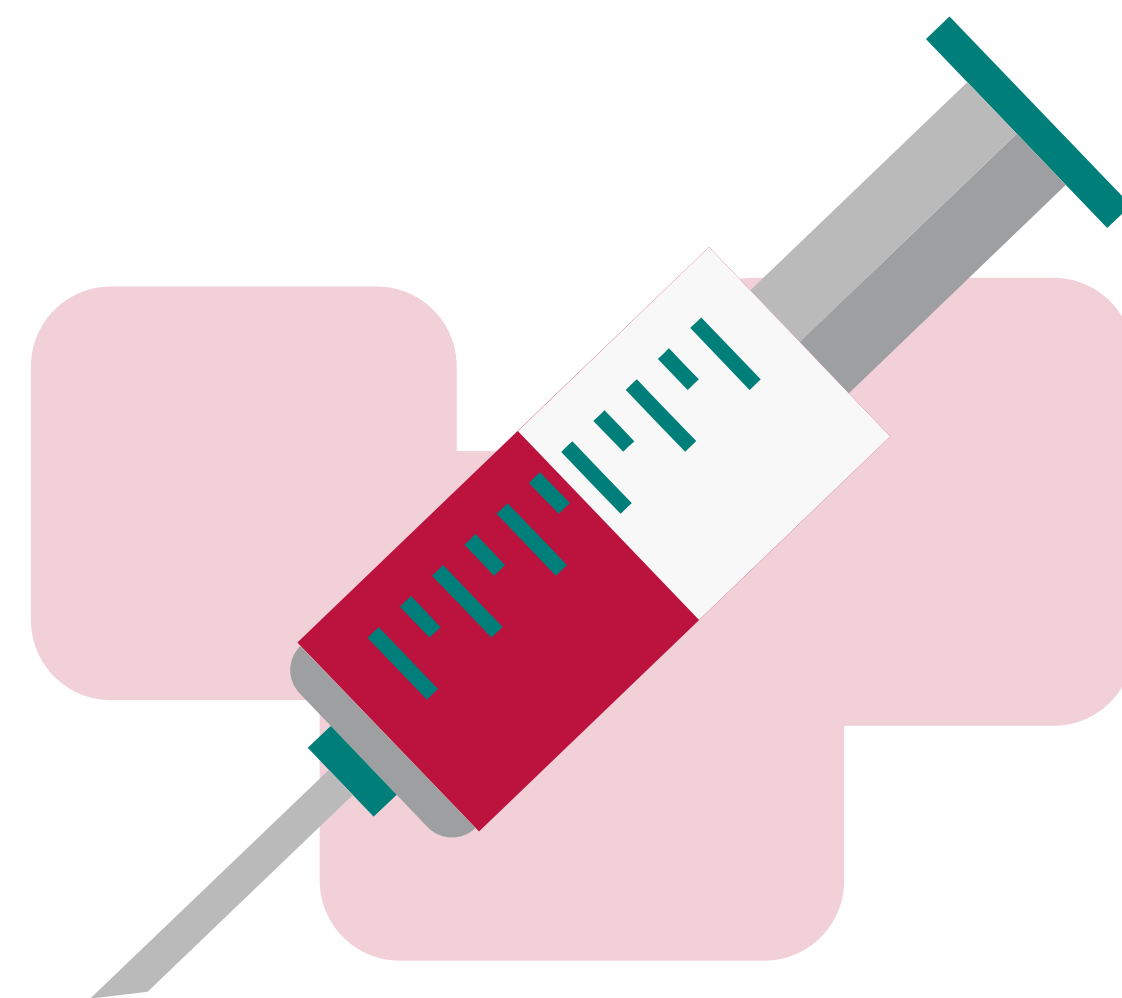
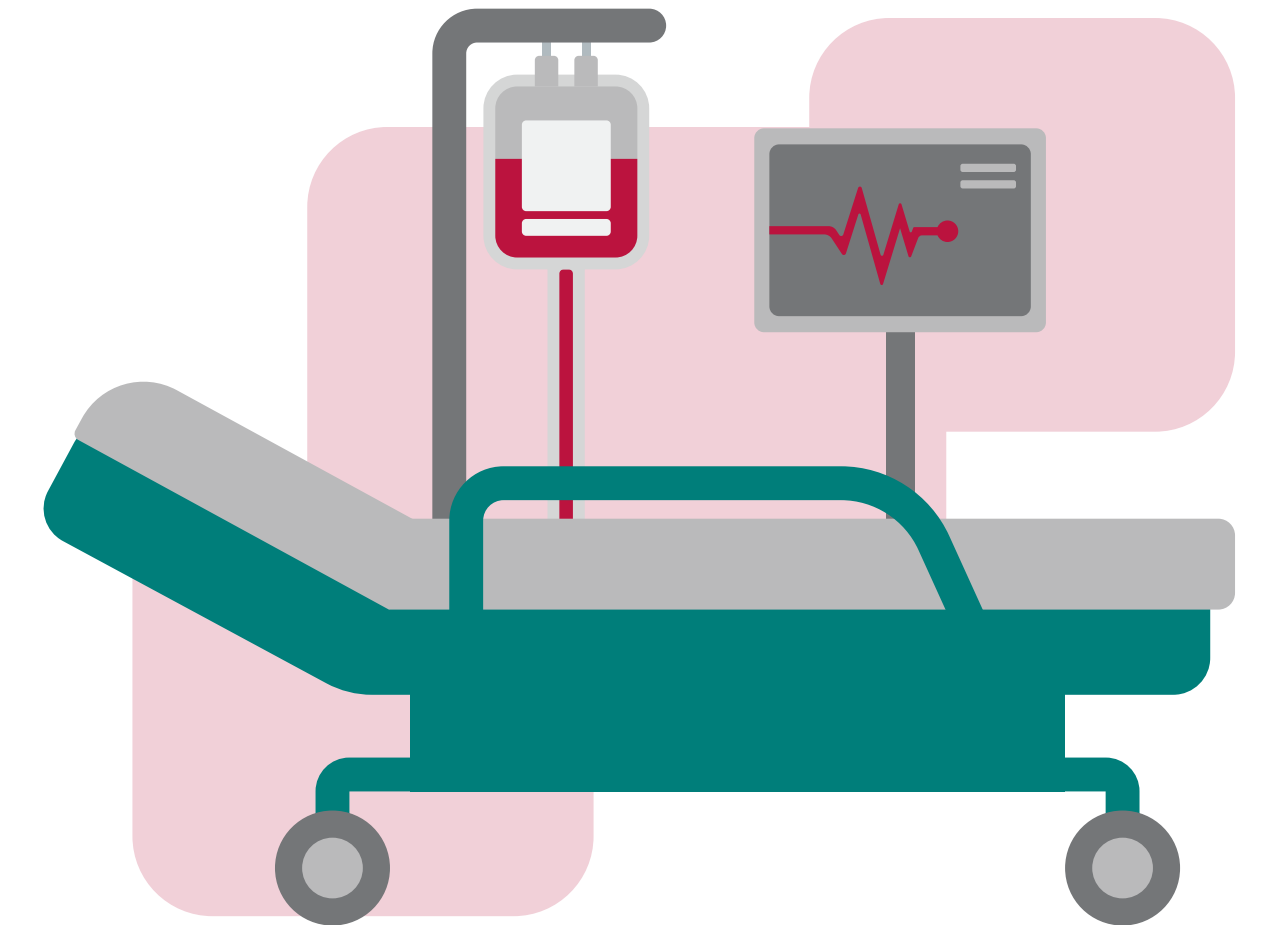
is an essential material used in a wide variety of medical instruments and devices where the highest standards of hygiene and sterility are essential.



Our impact  
on the  
**healthcare  
sector**

## Copper

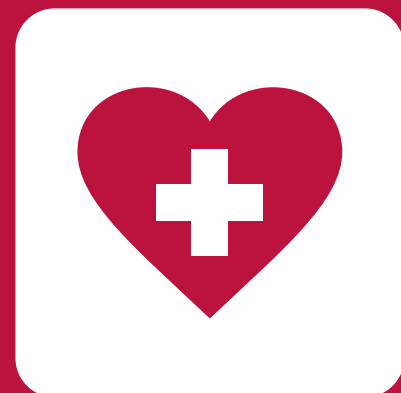
is antimicrobial. Hospitals integrate it into physical settings such as bed rails, door handles, IV poles and other exposed surfaces. It is used to help reduce the risk of infection.



## Gold

is a critical component in diagnostic COVID-19 test kits.

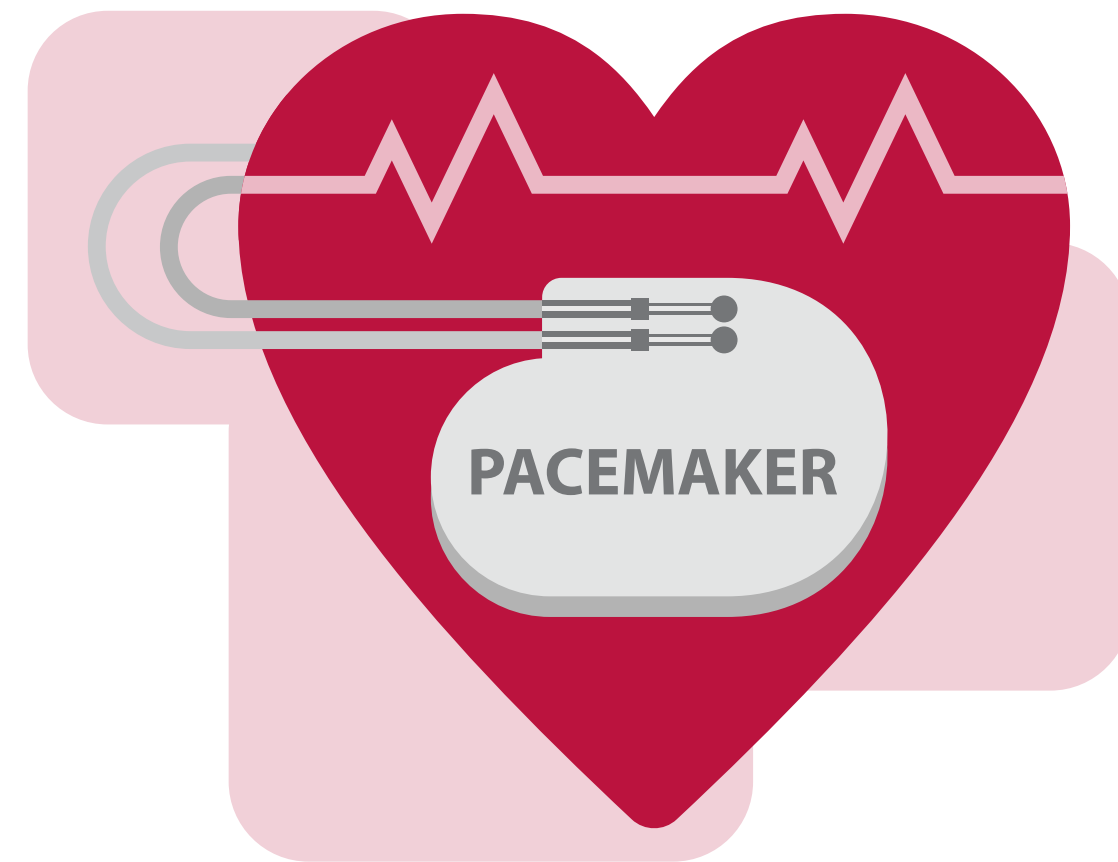
Gold nanoparticles penetrate cell walls, helping deliver drugs that treat malaria, HIV, arthritis and cancerous tumors.



Our impact  
on the  
**healthcare  
sector**

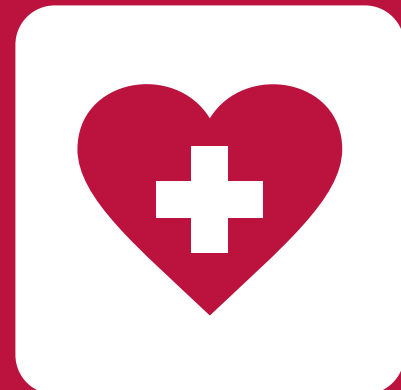
## Silver

is used in hospital fabrics and devices, leveraging its antimicrobial properties to reduce bacterial contamination and prevent cross-infection.



## Platinum Group Metals

have high biological compatibility and are used to make key components for essential medical devices, like implantable defibrillators, pacemakers, and other medical implants.



Our impact  
on the  
**healthcare**  
**sector**

# Nickel

contained in stainless steel plays a vital role in food safety at every link in the food chain.



# Copper

is naturally anti-microbial, important in the storage and transportation of water.



Our impact  
on **essential**  
life needs

# Platinum Group Metals

help desalinate water for us to drink.



# Silver

is used to help purify water and control bacteria growth.



Our impact  
on **essential**  
**life needs**



Our impact  
on **essential**  
**life needs**

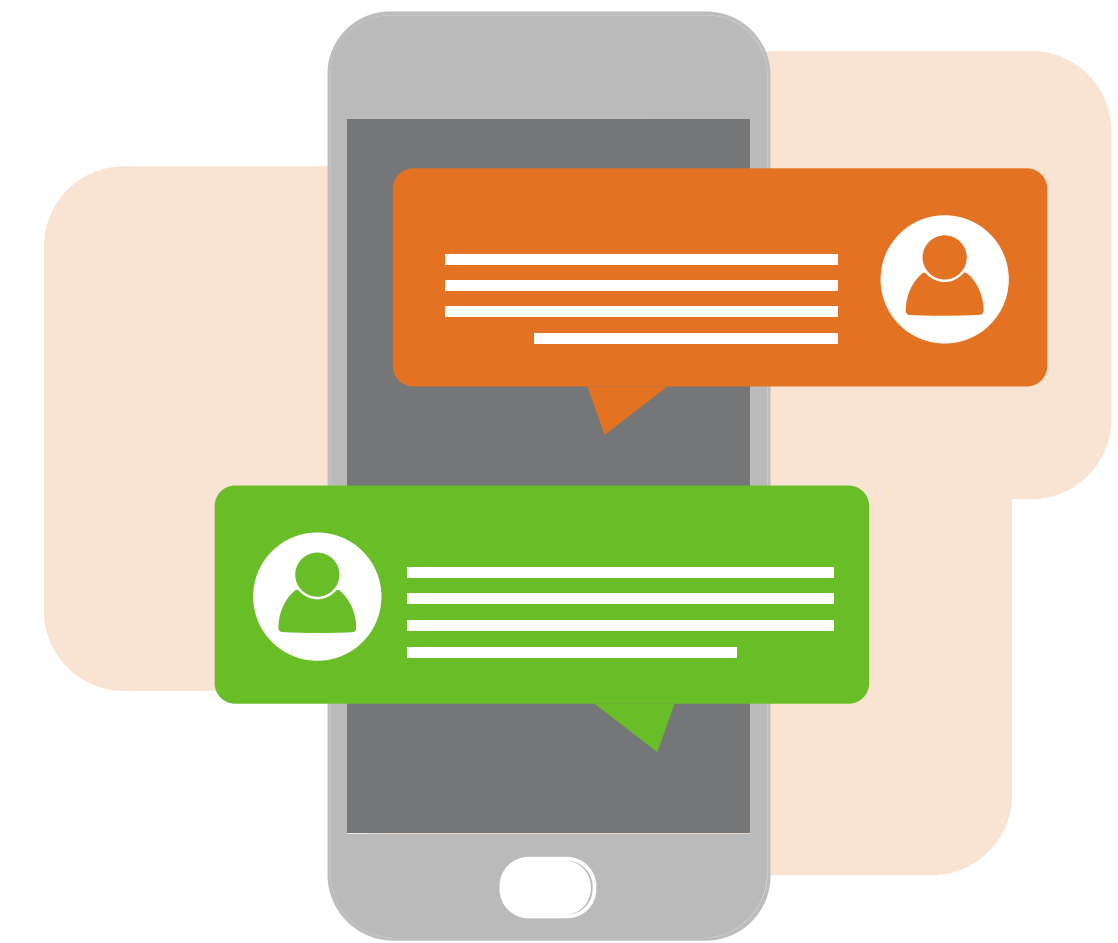
## Minerals and Metals

Metals are used to help build and maintain our homes, chosen for their durability, strength and resistance to weather.



# Nickel

is found in our mobile phones and laptops, as well as in the rechargeable batteries we use for electronics, vehicles and emergency power.



# Copper

is found in hydro transformers and wiring, keeping the electricity on in our homes and workplaces.



Our impact  
on keeping  
the **world**  
**connected**  
and **safe**





Our impact  
on keeping  
the **world**  
**connected**  
and safe

## Gold

is the world's most reliable and durable electrical conductor, essential for computer electronics and satellite communications.



## Silver

is found in virtually every electronic device. If it has an on/off button, it's likely that silver is inside.