

Minto copper-gold mine, Yukon, Canada
Capstone Mining Corp.

LOCATION: The Minto Mine is located in south central Yukon Territory, Canada; approximately 240 km NNW of the capital, Whitehorse.

STORY: The initial Minto discovery was made by ASARCO and United Keno Hill in 1972. Development was thwarted by split ownership and low metal prices until the present operators consolidated ownership in 2005 and copper prices increased. The mine currently processes 3,200 metric tonnes per day with head grades often above 3% copper. Since acquiring the property, Capstone has made 6 additional discoveries and a 4th expansion study is underway. Mineral resources as of June 9, 2009 are presented below (see news release of that date for appropriate NI43-101 disclosure and other qualifications).

The table shows mineral resources by classification for all deposits (at a 0.5% copper cut-off – June 9, 2009)

Classification	Tonnes (000's)*	Copper (%)	Gold (g/t)	Silver (g/t)	Contained Cu (000s lbs)*	Contained Gold (000s oz)*	Contained Silver (000s oz)*
Measured (M)	14,062	1.39	0.51	5.1	432,049	230	2,289
Indicated (I)	15,808	1.06	0.42	3.9	368,444	212	1,984
Sub-total (M+I)**	29,870	1.22	0.46	4.4	800,492	443	4,273
Additional Inferred	6,465	1.00	0.32	3.3	142,774	67	677

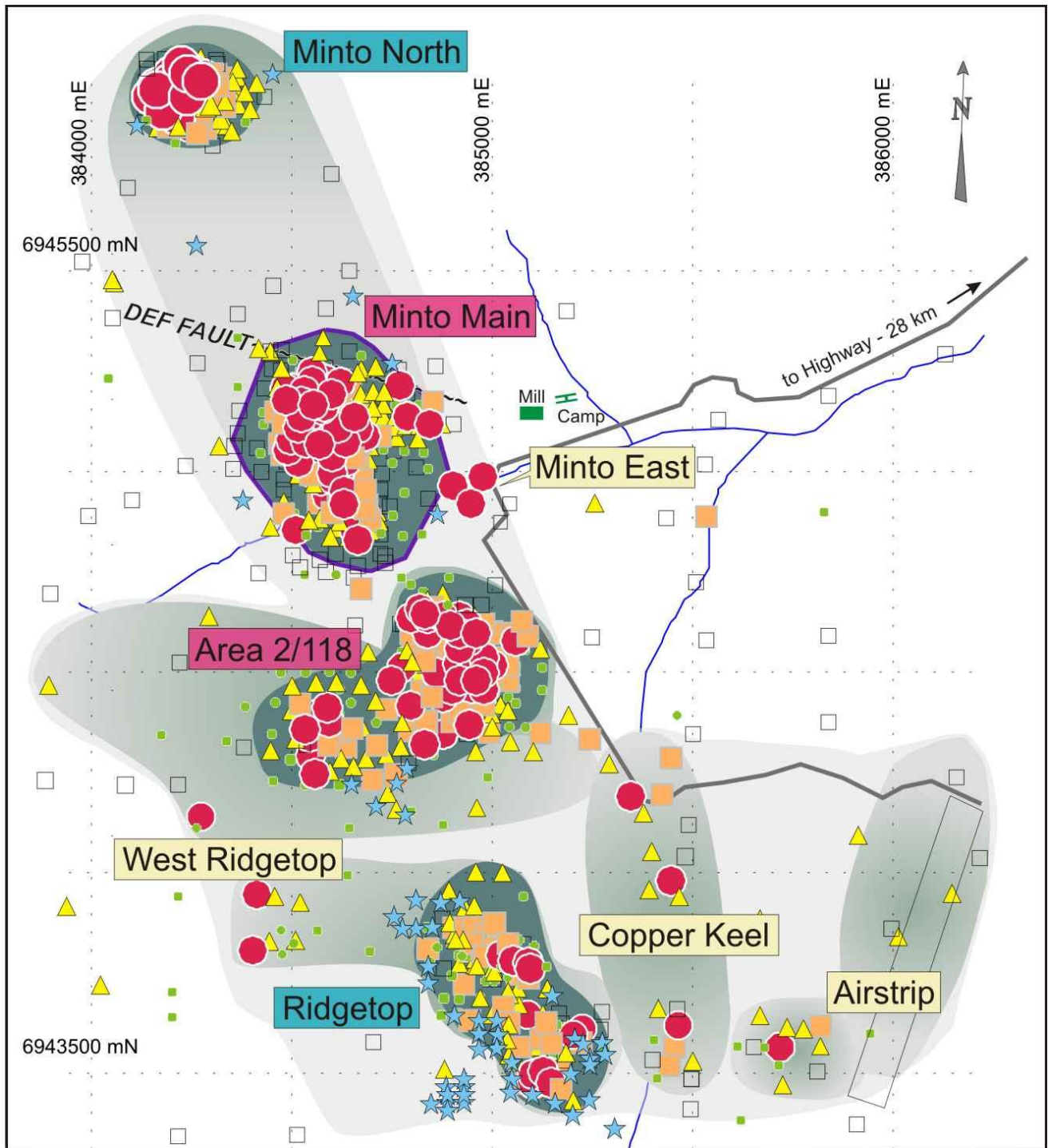
**Rounded to the nearest ten thousand **Totals may not add exactly due to rounding*





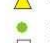



GEOLOGY: The Minto copper-gold deposits are hosted by Mesozoic Age plutonic rocks of the Granite Mountain Batholith which intrudes the Yukon-Tanana composite metamorphic terrain. The batholith is unconformably overlain by Late Cretaceous sedimentary and volcanic rocks of the Tantalus and Carmacks Formations. Intrusive rocks comprise primarily massive granodiorite which, at Minto, are cut by horizons of very discrete, localized zones of foliation. The deposits occur wholly within in these sub-horizontal foliated horizons, which range up to 60 m thick. The best grades tend to occur near hinge areas of gently undulating, NNW trending folds. While the enveloping surfaces of the deformed horizons are openly folded, the internal foliations often exhibit more complex and tight minor folds. Overall foliation dip directions are predominantly at high angles to their enveloping surfaces. Minto geologists believe that some the currently known deposits may have been one larger mineralized system, now broken up by high angle reverse faults.

DEPOSITS: There are seven separate, known copper-gold deposits within the Minto property. In order of discovery they are: Main (current open pit mine); Area 2; Area 118; Ridgetop; Copper Keel; Minto North and the latest discovery Minto East. The deposits do not easily conform to any clear cut model, however, the company believes they are

“Minto-Type” IOCG deposits. Primary mineralization is confined to foliated horizons within massive granodiorite, where chalcopyrite-bornite-magnetite occurs as disseminations, blebs and stringers. Coarse gold is noted and recovered in a gravity circuit in the mill, but is more typically found as micro inclusions in bornite. Pyrite is conspicuous by its low relative abundance to absence. Secondary mineralization consisting of chalcocite +/- minor malachite and azurite is mostly confined to the foliated horizons, but may overlap into non-foliated rock where it is fractured and weathered near surface.

DISPLAY: The core on display is examples of high grade copper-gold mineralization from the latest 2009 discoveries, Minto North (Feb 2009) and Minto East (September, 2009) deposits.



 <p>CAPSTONE MINING CORP.</p>	LEGEND		 <p>0 500 meters UTM NAD 83, Zn 8</p>
	<p>M Reserves and Resources</p> <p>R Resources Only</p> <p>P Prospect - No Resources Yet</p>	<p> > 3% Cu over =5 m</p> <p> > 2% Cu over =5 m</p> <p> > 1% Cu over =5 m</p> <p> > 0.5% Cu over =5 m</p> <p> all other drill holes >50m</p> <p> Assays Pending</p>	

16 November 2009